

The Scott Report: Worldwide Deployments of Automated Metering Devices

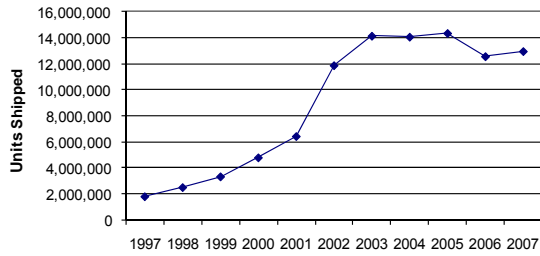
Twelfth Edition

Howard A. Scott, Ph.D.

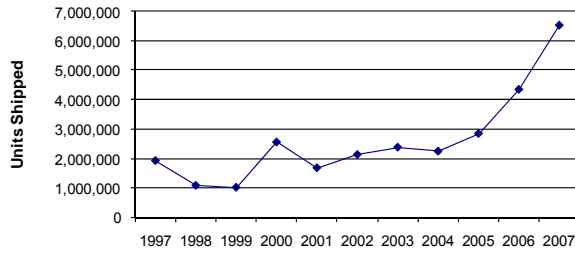
COGNYST ADVISORS
Technology for the Utility Industry

METERING
INTERNATIONAL

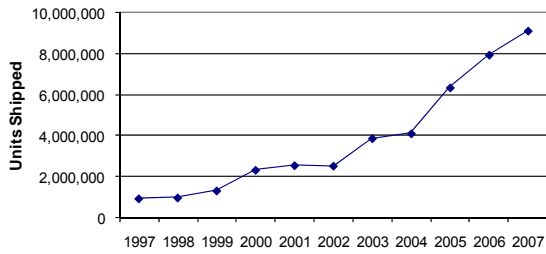
Total Annual Shipments - Electric



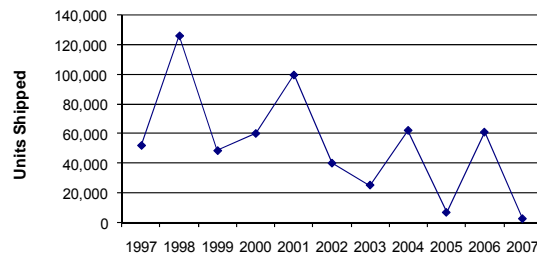
Total Annual Shipments - Gas



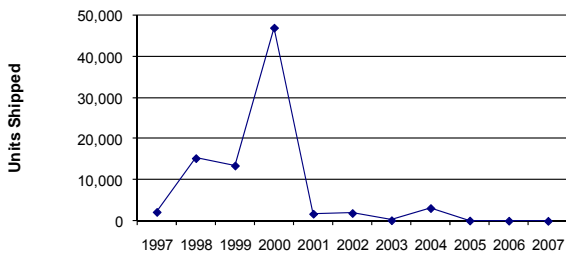
Total Annual Shipments - Water



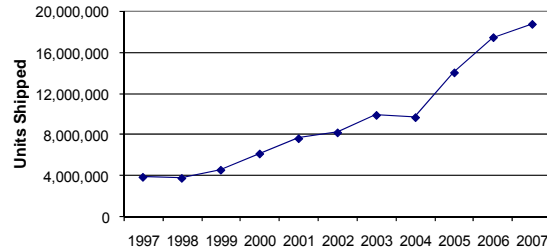
Total Annual Shipments - Heat



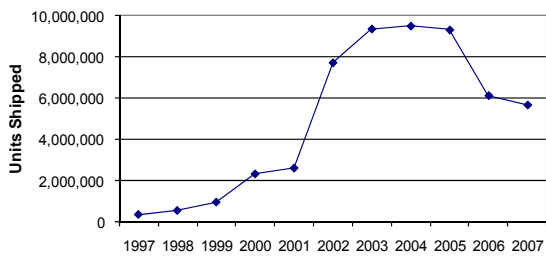
Total Annual Shipments - Miscellaneous Type Meter



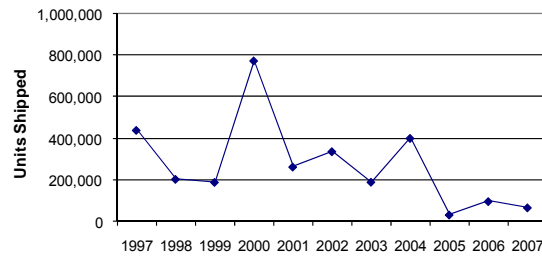
Total Annual Shipments - RF



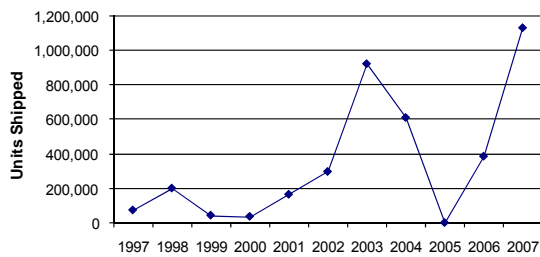
Total Annual Shipments - PLC



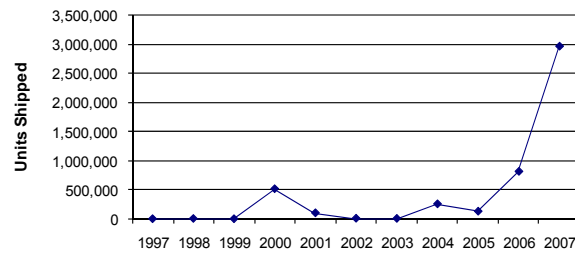
Total Annual Shipments - Telephone



Total Annual Shipments - Smart Card



Total Annual Shipments - Other Comm



5.3.6 Central and South America

There are no Automated Metering deployments for gas meters in Central and South America.

5.3.7 Europe

The table below lists Automated Metering deployments for gas meters in Europe.

Country	# Shipped	% Shipped	# Projects	% Projects
Turkey	1,764,295	94.9%	5	12.5%
UK	26,075	1.4%	3	7.5%
Misc. West Europe	21,000	1.1%	1	2.5%
France	19,834	1.1%	6	15.0%
Netherlands	15,807	0.9%	5	12.5%
Switzerland	3,845	0.2%	3	7.5%
Italy	2,678	0.1%	3	7.5%
Germany	2,561	0.1%	5	12.5%
Spain	1,436	0.1%	2	5.0%
Hungary	1,000	0.1%	1	2.5%
Ireland	201	0.0%	1	2.5%
Slovenia	139	0.0%	1	2.5%
Belgium	101	0.0%	2	5.0%
Luxembourg	20	0.0%	1	2.5%
Czech Republic	3	0.0%	1	2.5%
Total:	1,858,995	100.0%	40	100.0%

Below are listed the annual Automated Metering deployments for gas meters in Europe.

Country	2007	2006	2005	2004	2003
Turkey	900,000	35,359	0	147,500	10,057
Netherlands	15,243	0	0	0	0
France	4,471	13	0	0	350
Switzerland	3,845	0	0	0	0
Germany	2,556	5	0	0	0
Spain	206	1,230	0	0	0
Luxembourg	20	0	0	0	0
Czech Republic	3	0	0	0	0
Italy	0	1,400	900	-900	0
UK	0	414	0	20	0
Slovenia	0	139	0	0	0
Ireland	0	0	0	0	101
Total:	926,344	38,560	900	146,620	10,508

5.3.8 Middle East

There are no Automated Metering deployments for gas meters in the Middle East.

6.7.2 Annual Shipments

The annual list below includes all Advanced Metering units shipped per vendor for the history of the Advanced Metering industry to locations inside Australia and New Zealand.

Vendor	2007	2006	2005	2004	2003
Itron	152,842	27,352	7,406	37,179	6,508
Elster	93,659	3,844	95	25	0
Landis+Gyr	39,863	307,600	0	1,320	150
Aclara	29,076	1,430	0	0	0
ADD GROUP Ltd.	16,090	30,677	25,000	2,500	0
Trilliant	1,532	300	0	0	0
Eka Systems	150	40	25	3,614	0
Primestone	0	35,500	0	0	0
Datamatic	0	10	0	0	0
Badger	-10	20	0	0	0
Total:	333,202	406,773	32,526	44,638	6,658

6.7.3 Communication Types

Category	# Shipped	# Projects	Communication Type	# Shipped	# Projects
PLC	548,978	41	Landline	548,978	41
RF	375,692	79	RF	375,692	79
Misc.	35,500	1	Misc.	35,500	1
Telephone	16,986	19	Landline	16,986	18
			RF	0	1
Mixed	2,889	7	Landline	2,340	3
			Mixed	460	1
			RF, Landline	89	3
Total:	980,045	147		980,045	147

8.3.2.5 Shipments to Each State or Province

				USA				
Listed by Cumulative Units Shipped					Listed by # Projects			
State	Cumulative Shipped	# Projects	% of Total Shipped		State	Cumulative Shipped	# Projects	% of Total Projects
Texas	2,350,669	486	6.73%		California	1,547,349	509	7.04%
Pennsylvania	1,887,170	189	2.62%		Texas	2,350,669	486	6.73%
Florida	1,590,573	304	4.21%		Illinois	1,325,242	391	5.41%
California	1,547,349	509	7.04%		Wisconsin	778,690	332	4.60%
Misc.	1,543,492	262	3.63%		Florida	1,590,573	304	4.21%
Illinois	1,325,242	391	5.41%		Ohio	1,193,220	303	4.19%
Ohio	1,193,220	303	4.19%		New York	698,263	289	4.00%
North Carolina	1,111,650	200	2.77%		Misc.	1,543,492	262	3.63%
New Jersey	1,019,574	172	2.38%		Michigan	1,015,718	259	3.58%
Michigan	1,015,718	259	3.58%		Georgia	710,119	201	2.78%
Colorado	919,851	195	2.70%		North Carolina	1,111,650	200	2.77%
Wisconsin	778,690	332	4.60%		Massachusetts	706,615	200	2.77%
Georgia	710,119	201	2.78%		Minnesota	616,152	200	2.77%
Massachusetts	706,615	200	2.77%		Colorado	919,851	195	2.70%
New York	698,263	289	4.00%		Pennsylvania	1,887,170	189	2.62%
Minnesota	616,152	200	2.77%		Indiana	482,778	182	2.52%
Nevada	603,669	41	0.57%		Tennessee	465,673	176	2.44%
Indiana	482,778	182	2.52%		New Jersey	1,019,574	172	2.38%
South Carolina	473,776	121	1.67%		Missouri	346,206	165	2.28%
Tennessee	465,673	176	2.44%		Washington	295,921	165	2.28%
Alabama	447,187	106	1.47%		Kentucky	265,606	138	1.91%
Virginia	380,054	121	1.67%		Arkansas	155,874	137	1.90%
Utah	354,842	130	1.80%		Utah	354,842	130	1.80%
Missouri	346,206	165	2.28%		Iowa	291,639	122	1.69%
Arizona	314,038	98	1.36%		South Carolina	473,776	121	1.67%
Washington	295,921	165	2.28%		Virginia	380,054	121	1.67%
Iowa	291,639	122	1.69%		Alabama	447,187	106	1.47%
Kentucky	265,606	138	1.91%		Kansas	197,642	100	1.38%
Connecticut	250,611	40	0.55%		Arizona	314,038	98	1.36%
West Virginia	239,371	30	0.42%		Oregon	100,237	86	1.19%
Hawaii	222,864	20	0.28%		Louisiana	179,632	78	1.08%
Maryland	222,547	63	0.87%		Mississippi	67,101	68	0.94%
Rhode Island	204,672	35	0.48%		Maryland	222,547	63	0.87%
Kansas	197,642	100	1.38%		South Dakota	93,643	58	0.80%
Louisiana	179,632	78	1.08%		Oklahoma	83,355	52	0.72%
Nebraska	178,863	51	0.71%		Idaho	63,747	52	0.72%
Arkansas	155,874	137	1.90%		Nebraska	178,863	51	0.71%
District Of Columbia	150,517	10	0.14%		Montana	115,380	51	0.71%
New Mexico	127,257	37	0.51%		Nevada	603,669	41	0.57%
Montana	115,380	51	0.71%		New Hampshire	113,162	41	0.57%
New Hampshire	113,162	41	0.57%		Connecticut	250,611	40	0.55%
Oregon	100,237	86	1.19%		New Mexico	127,257	37	0.51%
South Dakota	93,643	58	0.80%		Wyoming	72,532	37	0.51%
Oklahoma	83,355	52	0.72%		Rhode Island	204,672	35	0.48%
Wyoming	72,532	37	0.51%		Delaware	58,595	31	0.43%
Mississippi	67,101	68	0.94%		West Virginia	239,371	30	0.42%
Idaho	63,747	52	0.72%		North Dakota	59,224	30	0.42%
North Dakota	59,224	30	0.42%		Maine	36,413	24	0.33%
Delaware	58,595	31	0.43%		Alaska	19,033	22	0.30%
Maine	36,413	24	0.33%		Hawaii	222,864	20	0.28%
Alaska	19,033	22	0.30%		Vermont	11,794	11	0.15%
Vermont	11,794	11	0.15%		District Of Columbia	150,517	10	0.14%
Puerto Rico	91	4	0.06%		Puerto Rico	91	4	0.06%
Total:	26,759,893	7,225			Total:	26,759,893	7,225	

THE SCOTT REPORT: Worldwide Deployments of Automated Metering Devices

Metretek		
State or Prov.	# Shipped	# Projects
NJ	14,161	5
IL	8,679	7
PA	5,522	9
NY	5,207	10
MN	4,475	4
CA	3,907	4
NC	2,838	8
IN	2,576	8
CT	2,500	2
MA	2,194	4
OH	2,071	7
IA	2,027	5
FL	1,834	10
CO	1,820	3
MD	1,780	2
GA	1,693	2
MI	1,488	5
DC	1,473	1
WA	1,318	4
WI	1,070	5
KS	778	1
TN	633	4
AL	571	5
VA	545	5
MO	543	5
AR	526	2
TX	423	3
ND	369	1
NE	286	3
MT	183	1
KY	155	3
SD	148	1
WV	122	1
ID	92	1
RI	55	1
DE	51	2
AK	42	1
UT	40	1
SC	34	2
NM	17	1
ME	9	1
OR	3	2
WY	2	1
NV	1	1
ON	7,663	4
QC	6,710	1
BC	1,669	1
AB	1,079	3
Total:	91,382	163

muNet.com		
State or Prov.	# Shipped	# Projects
WA	10,545	6
TN	2,100	2
KY	850	2
MA	608	5
OH	315	2
IA	306	6
UT	211	2
FL	95	1
CA	43	6
AL	42	1
CT	38	2
PA	27	2
MI	23	2
HI	16	1
MD	14	1
NC	11	1
TX	7	2
MO	6	2
AK	4	1
ID	3	1
Misc.	2	1
GA	2	2
SC	2	2
VA	2	1
AR	1	1
MS	1	1
NY	1	1
QC	1	1
Total:	15,276	58

SmartSynch		
State or Prov.	# Shipped	# Projects
Misc.	82,509	1
CA	13,250	5
FL	1,393	2
OR	1,246	2
MD	850	2
MA	817	2
NC	350	1
PA	189	2
IL	102	1
NY	51	2
TX	29	2
NJ	21	2
WI	1	1
WA	1	2
AL	1	1
MO	1	1
CO	1	1
NE	1	1
MI	0	1
IN	0	1
SC	0	2
TN	0	1
AZ	0	3
DE	0	1
QC	0	1
Misc.	0	1
ON	0	15
Total:	100,813	57

Neptune		
State or Prov.	# Shipped	# Projects
NJ	694,748	25
OH	440,520	17
FL	376,810	9
TX	333,369	23
PA	326,374	13
MA	273,700	15
MN	267,174	5
IL	261,296	16
NY	245,799	17
NC	237,290	7
AL	205,598	11
CT	197,615	14
MI	189,720	1
GA	189,046	6
WV	182,222	2
Misc.	157,825	26
CA	123,461	23
CO	87,459	3
KY	79,382	5
MO	71,236	8
MT	57,584	3
IN	57,533	4
TN	47,929	7
UT	47,004	2
IA	35,341	7
SD	33,897	1
WA	32,429	5
NM	29,273	2
LA	29,171	2
KS	24,677	4
ID	23,697	1
ND	22,050	2
NH	21,200	3
MD	18,378	3
AR	17,250	6
AZ	17,129	6
WI	14,480	1
OK	14,262	3
OR	8,441	5
MS	8,126	3
NE	7,639	4
AK	5,710	2
SC	4,138	2
RI	3,634	3
HI	3,384	3
VA	754	2
NV	253	1
WY	100	1
DE	23	2
Misc.	1,518	3
MEX	1,807	1
AB	50,368	36
ON	37,409	46
BC	35,045	19
MB	21,921	12
NS	10,283	6
NB	4,767	9
SK	4,241	8
QC	1,912	1
Misc.	1,400	1
PE	50	1
Total:	5,696,851	479

Primestone		
State or Prov.	# Shipped	# Projects
AB	10,000	1
Total:	10,000	1